

Cherry

Character Wordle for *The Outsiders*

BRAVE

lots of friends



loving

Strong opinion

Beautiful

SWEEPER LEADER
HAPPY
FEARLESS

Cool
Understanding
Calm



Mature

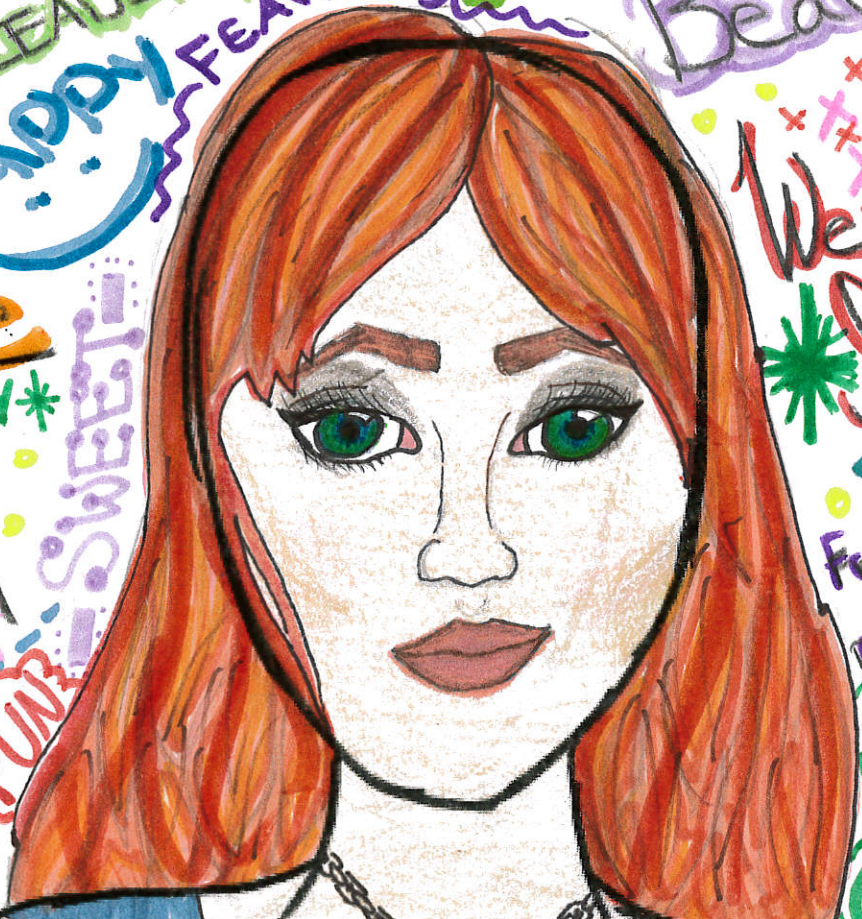
"She's CRAZY*
a real looker!"

BLUE
EYES
CUTE
BITE



Friends with
Marshie

Sunset



West
Side

STRONG

BADBOYS

Friends with
Ponyboy
and
Johnny

STUBBORN



BRIGHT
RED
HAIR
FUNNY
SUPER

"Soda"

Loves Sandy

Curtis

Character Wordle for *The Outsiders*

Can't sit still very long

sensitive

Never Drinks

Hyperactive brother

High in life

Has a horse
Nickel, Moose

Greaser

BEST FRIENDS WITH STEVE

Understanding

★ movie-star handsome ★

NICE

Stands up for Ponyboy

Happy-go-lucky

Thinks of himself as dumb

Sodapop

16 yrs old

Unique

easy going

